

# Rocky News

RMCDs

## NCDB Submission Changes by Kim Best

As you may be aware the American College of Surgeons Commission on Cancer has changed the way that the current NCDB submission will be done. Information can be found at their web site:

<http://www.facs.org/dept/cancer/ncdb/index.html>

Among the changes are the following:

Receipt of submission will begin November 30, 2001. Submission deadline is December 31, 2001.

Hospital cancer registries which are part of a CoC approved cancer program must submit cases via a secured

internet application. Specific instructions describing this process will be distributed in advance of the beginning of the data submission period.

Hospital cancer registries which are not part of a CoC approved cancer program must submit cases on an IBM-compatible diskette, compact disc (CD) or magnetic tape.

ACOS should be sending hospitals additional information on how to transmit the data. They should also be sending them an Id name and password to logon to the application. In addition

Rocky Mountain has been authorized to send data on behalf of our clients. This should only be done by hospitals that do not have internet access. If at all possible hospitals should do the transmission themselves.

We have changed the NCDB submission in Rocky Mountain to make the write out to diskettes optional. If a hospital does not check the write out box, a message will appear at the end, with the exact file name and location to aid them in transmitting the file.

Autumn 2001

Volume 3 Issue 3

### Inside this issue:

NCDB Submission Changes	1
RMCDs Closures for 2002	2
Checking Revisions	2
Executive Committee Report	2
Billing Schedule and Updates	3
NEW Updating Option	3
ICDO-3 Recommendations	4

- Thank You to every one who helped and participated with the RMCDs Annual Meeting. Everything went well. Thank you for your support.

## Death of a Colleague

Don Danuloff, Director of the Nevada Statewide Cancer Registry, passed away in his sleep on October 28, 2001. The staff of RMCDs would like to ex-

press their sincerest condolences to Don's wife Rose Mary and to the staff of the Nevada Statewide Cancer Registry.

## Birth in the Family

Larry and his family welcomed the birth of their second grandchild on October 10<sup>th</sup>. Larry's eldest daughter Lisa and her husband Mark Brown are the

proud parents of Katie.

Rmcds1.med.  
utah.edu

# RMCDS Closures for 2002

Rocky Mountain will be closed the following Holidays for Fall/Winter 2001 and all of 2002.

November 22 and 23 Thanksgiving

December 7, Limited Staff

December 13, Limited Staff

December 14, RMCDS staff will be out of the office from 11:00 am to about 3:00 pm.

December 21 at 5:00 p.m. And will open January 2, 2002

January 21 Martin Luther King Jr. Birthday (Civil Rights Day)

February 6th , 7th, and 8th Opening Ceremonies Rehearsal and Opening Ceremonies for the 2002 Winter Olympic Games

February 18 Presidents

May 27 Memorial Day

July 4th Independence Day

July 24th Pioneer Day State Holiday



**SALT LAKE 2002**



THE 2002 WINTER OLYMPIC GAMES

Winter Olympics is coming our way. Because our facilities are so close to event locations we will be closed on certain days.

September 2 Labor Day

November 28 and 29 Thanksgiving

December 24 to January 2 , 2003 Winter Holiday

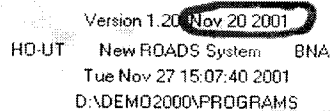
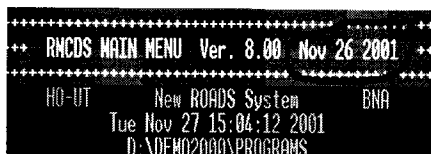
We hope this schedule will help.

If you have any questions please contact Laura by email: LF11@utah.edu

## Checking Revisions

After you have completed a revision you should check to see that you got the most current programs in both the DOS version and the Windows version. The easiest way to make sure your revision worked is to look at the date of your programs. Below is an illustration of where to find the revision

date in both the DOS programs and the Windows programs.



You may notice that the date is not the same in both programs. If the date is the same or a day apart you are O.K. If the dates are more than a day apart, as illustrated, please let us know so we can make sure everything is compiling correctly for your state.

Nicole Aagaard

## Report from the RMCDS Executive Committee

The Executive Committee met during the annual meeting in Park City, Utah on September 26, 2001. We let Larry choose the restaurant (just to humor him) and we ended going to Texas Reds BBQ! One of the "perks" of being on the Executive Committee is that RMCDS buys dinner! After devouring

jalapeno poppers, we got down to business.

Topics of discussion included:

- 1) HIPPA. How HIPPA will affect RMCDS registries was an area of concern. We felt that questions raised by RMCDS participants should be submitted to

NAACCR, who has access to legal counsel.

- 2) Price Increases. The Executive Committee reviews financial statements throughout the year to use in the decision-making process

Committee is continued at top of page three.

## Continued from Committee

concerning fees for the next contract period. Travel cost for staff visiting states numerous times is being reviewed.

- 3) Difference Report. This report continues to be refined. What variables to include in the report are being reviewed.
- 4) How Do I. RMCDS is looking into converting these documents into Word so people will

have a choice between Word and Word Perfect. Converting all files to "pfd" is also an option.

As you know, the Executive Committee is a volunteer advisory committee to RMCDS. We encourage you to contact the committee member who is responsible for your state if you have any questions or concerns. As a reminder, the following member is responsible for each central registry.

Stacey Carson (ID):  
AZ, IL, NH, NV, VA  
Kay Hicks (WA):  
CO, IN, MT, OK, UT  
Bette Smith (OH):  
DC, NE, OR, WV  
Marilyn White (PA):  
DE, KS, NJ, RI, WY

**The Executive Committee  
wishes everyone a wonderful  
holiday season!!**

## Billing Schedule and Updates

With the start of a new year comes new years resolutions, goals, a certain peace that follows the holidays, and the RMCDS annual billing cycle. Most of the participants using the RMCDS software are on an annual billing schedule and receive the invoice for the year in January or early February. Some participants utilize a quarterly billing cycle and receive an invoice every 3 months, while a handful of facilities are on a fiscal year billing cycle. What ever schedule applies

to you, please keep in mind when to expect your bill and if it does not arrive when you think it should, please contact David at RMCDS to find out why. We have recently undergone an internal audit from the University of Utah, and the question of past due bills came up. Many of these invoices were found to have been misplaced or where not directed to the proper person. If you have changed address, or personnel in charge of receiving invoices, please submit

that information in writing to David Fawcett. Mailing address is: 420 Chipeta Way #120 S.L.C, UT 84109, or via email at david.fawcett@m.cc.utah.edu. I will make the needed corrections and re-submit an invoice if it is required. Thank you for your cooperation in this matter. If there are any questions regarding invoices or billing schedule, please let me know. Happy Holidays. Dave

## NEW Option for Updating Programs

NEW option for updating your RMCDS programs under **Software Updates** in the Windows system. The label option is: FTP update done automatically. If you can download files off the FTP site, this option will load the files and run the revision for you. You no longer need to go into Internet Explorer or Net-

scape and download the files first. Choose this option and it will get the files off the FTP site and automatically run the revision right after. You will first need to update your pro-



Automatic updates from the RMCDS FTP Site now available.

grams the way you usually do and the next time you run RMCDS you will have the new option available. This option was made available November 28. Mark Hunzeker

## Recommended Procedure for ICDO-3 Conversion

During the summer some corrections to the ICDO-2 to 3 conversion came out (As far as we know there were none to the conversion ICDO-3 to 2).

We put the corrections into the RMCDS system shortly thereafter that all cases after that time would be converted using the updated version of the program. But this left the question about those that were converted before the conversion came out. When the upgrade became available there were no instructions on what to do about cases that had been previously converted, so we have come out with our own recommendation. (As far as I know there has not been an explanation or recommendation concerning the updated conversion program.)

First of all, this issue does not involve either the NAACCR Call for Data 2002, the NCDB Call for Data, nor the NPCR Call for Data. The data you submit to those agencies does not involve the ICDO-3 Histology.

### **Recommended procedure:**

Our recommended procedure is basically to re calculate the ICDO-3 conversion (For cases Dx before 2001) and compare the reconversion with the value currently in the ICDO-3 histology. If they are different they can be reported on a review list. The program option can be run with or without replacing the ICDO-3 field with the new conversion. We recommend doing the procedure as follows:

(This procedure is showing the DOS version.)

From the RMCDS Main Menu go to option f) Special Functions Menu.

Go to the option f) Special Data Modifications.

Select option t) Conversion Utility to Convert ICDO-2-3. (Give the usual password)

The first time you run the program answer 'N' to the question "Do you want to update records ..."

Respond with a '2' on the question "What type of Conversion ..." Option 2 is "Perform Conversion to check old conversion with new conversion."

The 1st time answer with a '1' to the review list question. This will show all cases that will be different when you run the program selecting update. This option will show what will end up happening on the conversion and the number and types of histology.

Select option '2' The Master File

The program will run through the master file and generate a review list that will include all the histology's that will be changed on the real run.

After it goes through the Master File Cases press <ENTER> to get to the review list.

You can do the usual (Examine, Print, Delete, etc.)

That concludes the 1st run.

The 2nd run is as follows:

After you have reviewed the results and feel comfortable with doing the conversion.

Again go to the f) Special Functions Menu, f) Special Data Modifications menu, t) Conversion Utility ICDO-2-3

This time enter 'Y' to the question about updating the cases.

Respond with a '2' for the type of conversion.

Respond with a '2' for the type of review list.

This will give you a very short review list on conversion of some histology conversions to review.

Select '2' The Master File and the program will start again and this time do the actual conversion to cases.

Press <Enter> at the end of the run to get the review list options. You will probably want to print the review list this time.

If you do not wish to review the cases before doing the update, just start with the 2nd run.

If you have any questions or comments give me a call.

Larry Derrick